



Cordless Crimper DTC301 / DTC302



Photo: DTC302

Capable of crimping terminals onto large-diameter electric wires

DTC301
Ram stroke length: 31 mm



DTC302
Ram stroke length: 42 mm



Crimping capacity	
DTC301	DTC302
Cu	Cu
Ø19.5 mm (300 mm²)	Ø22.5 mm (400 mm²)
Al	Al
Ø19.5 mm (300 mm²)	Ø19.5 mm (300 mm²)

		DTC301	DTC302
Ram stroke length		31 mm	42 mm
Crimping capacity	Cu	ø19.5mm 300 mm ²	ø22.5mm 400 mm ²
	Al	ø19.5mm 300 mm ²	ø19.5mm 300 mm ²

Crimping head

The head rotates 270 degrees, making it easy to use in a variety of orientations.



Auto retract function

- The ram automatically retracts to its original position after completing the crimping operation, enhancing work efficiency.
- The On/Off setting of the auto retract function can be switched by turning the screw.



Manual / Auto

Die release knob

Die release pin



photo: DTC302

Release knob

To retract the ram manually, press the release knob.

LED job light

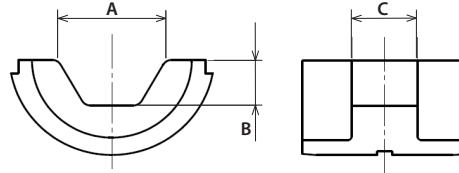
Single LED with afterglow function



Accessories

Hex. Die

Hexagonal (U-type) dies to crimp copper and aluminum terminals with the 12-ton crimper (Compatible with DIN46235)



Shoulder belt

Part No.
161347-8



Die No.	Range (mm ²)	A (mm)	B (mm)	C (mm)	Part No.
K6	Cu 10	6.2	2.2	12	ZM00000216
K8	Cu 16	8.2	3.0	12	ZM00000217
K10	Cu 25 / Al 16	9.7	3.6	12	ZM00000218
K12	Cu 35 / Al 25	11.8	4.4	14	ZM00000219
K14	Cu 50 / Al 35	13.8	5.3	14	ZM00000220
K16	Cu 70 / Al 50	15.8	6.0	14	ZM00000221
K18	Cu 95 / Al 70	18	7.0	14	ZM00000222

Die No.	Range (mm ²)	A (mm)	B (mm)	C (mm)	Part No.
K20	Cu 120 / Al 95	19.8	7.6	14	ZM00000223
K22	Cu 150 / Al 120	22.3	8.7	13	ZM00000224
K25	Cu 185 / Al 150	24.3	9.6	12	ZM00000225
K28	Cu 240 / Al 185	27.8	11.5	11	ZM00000226
K32	Cu 300 / Al 240	31.5	13.6	9	ZM00000227
K34	Cu 400 / Al 300	33.7	14.5	7	ZM00000228



Charging Time

Battery Model	Fast Charging	
	DC18RC	DC18SD
BL1815N 1.5Ah	15 min	30 min
BL1820B 2.0Ah	24 min	45 min
BL1830B 3.0Ah	22 min	60 min
BL1840B 4.0Ah	36 min	90 min
BL1850B 5.0Ah	45 min	110 min
BL1860B 6.0Ah	55 min	130 min

Cordless Crimper

DTC301 / DTC302

	DTC301	DTC302
Built-in Job Light	Output force 120 kN	120 kN
Carrying Case	Ram stroke length 31 mm (1-1/4")	42 mm (1-5/8")
	Crimping capacity Cu: ø19.5(300mm ²) Al: ø19.5(300mm ²)	42 mm (1-5/8") Cu: ø22.5(400mm ²) Al: ø19.5(300mm ²)
	Dimensions (L x W x H) 415 x 92 x 346 mm (16-3/8 x 3-5/8 x 13-5/8")	437 x 94 x 349 mm (17-1/4 x 3-11/16 x 13-3/4")
	Dimensions (Battery) BL1860B	BL1860B
	Net weight 6.8 - 7.1 kg (15.0 - 15.7 lbs.)	7.5 - 7.8 kg (16.5 - 17.2 lbs.)
	Net weight (Battery) BL1815N - BL1860B	BL1815N - BL1860B

The weight may differ depending on the attachment(s), including the battery cartridge.
Items of standard equipment and specifications may vary by country or area.

Makita Corporation

3-11-8 Sumiyoshi-cho, Anjo, Aichi, 446-8502 Japan

PRINTED IN JAPAN 202412