



TH	THAILAND
----	----------

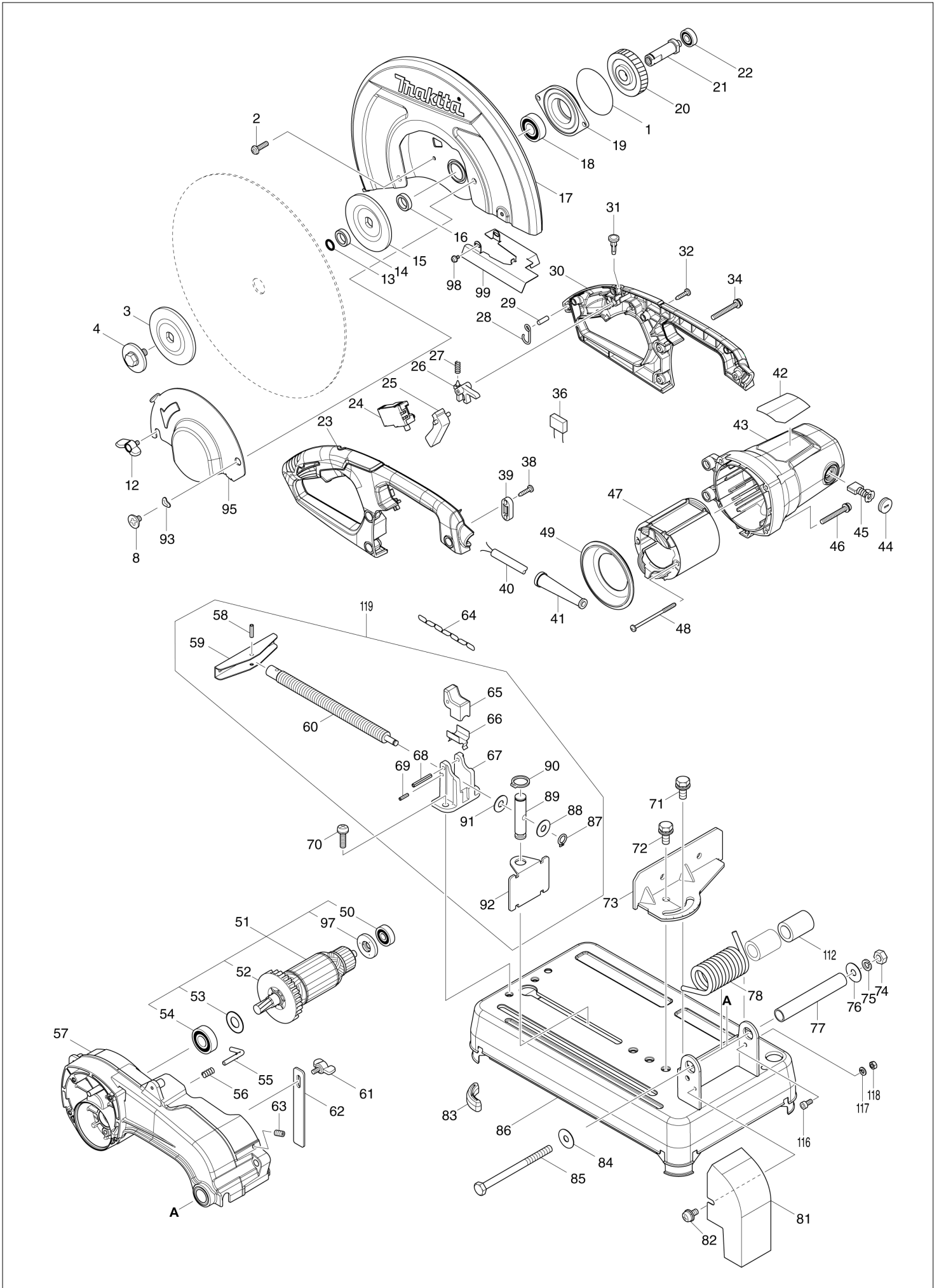
# Diagram / Parts List

**LW1401**

**355MM PORTABLE CUT-OFF**



(TH) LW1401 / 355MM PORTABLE CUT-OFF



<b>TH</b>	<b>THAILAND</b>
-----------	-----------------

### LW1401 / 355MM PORTABLE CUT-OFF

Item	Sub	Parts No.	Parts Description	Qty	I/C	E/C No.	Close No.	Remark
001		213858-0	O-RING 65	1				
002		265122-5	PAN HEAD SCREW M5X20	4				
003		224299-5	FLANGE 90	1				
004		251680-7	HEX. BOLT M10X25	1				
008		265121-7	+ FLAT HEAD SCREW M6	1				
012		265754-8	THUMB SCREW M6X12	1				
013		213180-5	O RING 14	1				
014		257255-0	RING 17	1				
015		224299-5	FLANGE 90	1				
016		257255-0	RING 17	1				
017		161400-0	SAFETY COVER	1				
018		211282-1	BALL BEARING 6203ZZ	1				
019		319393-7	BEARING BOX	1			Y07850	
019-1		136029-1	BEARING BOX ASSY	1	<	Y07850		
	D10		INC. 1					
020		227811-0	HELICAL GEAR 50	1				
021		324321-9	SPINDLE	1				
022		210067-2	BALL BEARING 6000ZZ	1			C7958	
022-1		210199-5	BALL BEARING 6000ZZ	1	O	C7958		
023		183C14-3	HANDLE SET	1				
	D10		INC. 30					
024		650716-3	SWITCH TGC31B	1				
025		418141-2	SWITCH LEVER	1				
026		418139-9	SWITCH LOCK	1				
027		231397-8	COMPRESSION SPRING 4	1				
028		281216-8	HANGER	1				
029		268101-2	PIN 6	1				
030		183C14-3	HANDLE SET	1				
	D10		INC. 23					
031		411478-6	SWITCH BUTTON	1			B5006	
031-1		417113-4	SWITCH BUTTON	1	<	B5006		
032		266326-2	TAPPING SCREW 4X18	4				
034		265104-7	PAN HEAD SCREW M5X40	3				
038		266326-2	TAPPING SCREW 4X18	2				
039		687140-7	STRAIN RELIEF	1				
040		691237-6	POWER SUPPLY CORD 1.25-2-3.0	1				
041		682574-9	CORD GUARD 10-90	1				
042		851S55-0	LW1401 NAME PLATE	1				
043		143463-8	MOTOR HOUSING COMPLETE	1				
	C10	643712-8	BRUSH HOLDER	2				
044		643700-5	BRUSH HOLDER CAP 7-18	2				
045		B-80341	CARBON BRUSH SET CB-203A	1				
046		265104-7	PAN HEAD SCREW M5X40	4				
047		593908-0	FIELD ASS'Y 220V	1				
	C10	654197-3	RING TERMINAL	2				
	C20	654502-4	CONNECTOR P-2	2				
048		265A13-6	TAPPING SCREW 5X85	2				
049		418143-8	BAFFLE PLATE	1				
050		210070-3	BALL BEARING 6200ZZ	1				
051		513463-6	ARMATURE ASS'Y 220-240V	1				
	D10		INC. 50,52-54,97					
052		240164-0	FAN 80	1				
053		267714-6	WASHER 15	1				
054		211240-7	BALL BEARING 6202ZZ	1				
055		324322-7	STOPPER	1				
056		233372-0	COMPRESSION SPRING 7	1				
057		143464-6	GEAR HOUSING COMPLETE	1			B2830	
	C10	263029-9	RUBBER PIN 6	1			B2830	
057-1		143464-6	GEAR HOUSING COMPLETE	1	S	B2830	C3995	
	C10	263029-9	RUBBER PIN 6	1		B2830	C3995	
057-2		140G83-1	GEAR HOUSING COMPLETE	1	<	C3995	C5969	
	C10	263029-9	RUBBER PIN 6	1		C3995	C5969	
057-3		140D69-7	GEAR HOUSING COMPLETE	1	O	C5969		
	C10	263029-9	RUBBER PIN 6	1		C5969		
058		951163-4	SPRING PIN 5-20	1				

A:LW1401(H)

Interchange  
O : Yes  
X : No  
< : the new part can be substituted for the current.  
> : the current part can be substituted for the new.  
S : Interchangeable as a set.

