



TH	THAILAND
----	----------

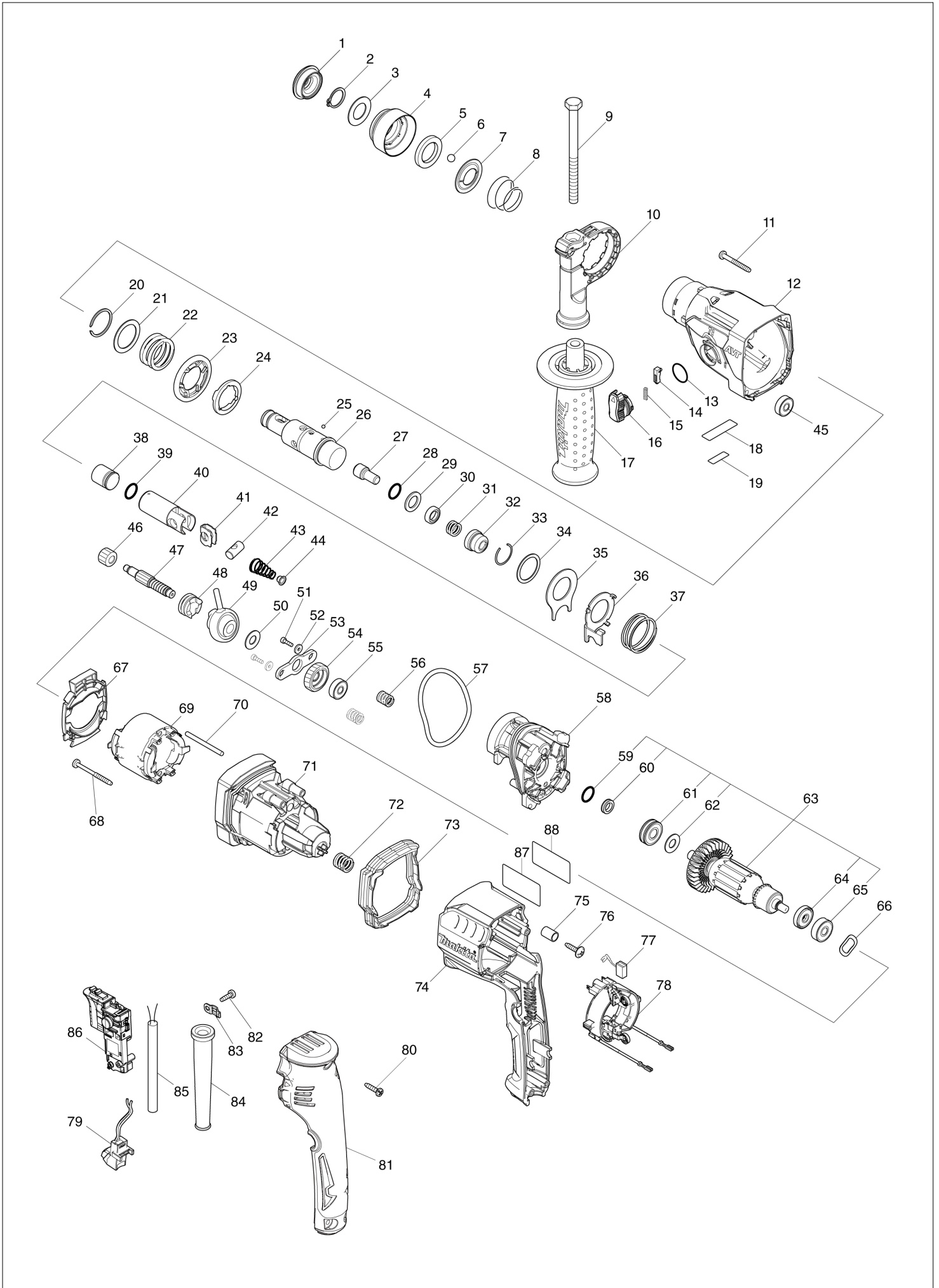
Diagram / Parts List

HR1841F

18MM ROTARY HAMMER



(TH) HR1841F / 18MM ROTARY HAMMER



TH	THAILAND
-----------	-----------------

HR1841F / 18MM ROTARY HAMMER

Item	Sub	Parts No.	Parts Description	Qty	I/C	E/C No.	Close No.	Remark
001		286037-3	CAP 34	1				
002		961057-5	RETAINING RING S-17	1				
003		253377-4	FLAT WASHER 17	1				
004		457214-6	CHUCK COVER	1				
005		257416-2	RING 21	1				
006		216022-2	STEEL BALL 7.0	2				
007		346177-0	GUIDE WASHER	1				
008		232347-6	CONICAL COMP. SPRING 21-29	1				
009		921923-8	HEX. BOLT M8X120	1				
010		417911-6	GRIP BASE	1				
011		266053-1	TAPPING SCREW 4X35	4				
012		144271-0	GEAR HOUSING COMPLETE	1				
	C10	213636-8	OIL SEAL 25	1				
	C20	211375-4	BALL BEARING 6805LLB	1				
013		213278-8	O RING 17	1				
014		161568-2	LOCK BUTTON COMPLETE	1				
015		232344-2	COMPRESSION SPRING 3	1				
016		161569-0	CHANGE LEVER COMPLETE	1				
017		158057-6	GRIP 36 COMPLETE	1				
	C10	931402-8	HEX. NUT M8	1				
018		457356-6	PLATE	1				
019		853K20-7	HR1841F SERIAL NO. LABEL	1				
020		961135-1	RETAINING(EXT) WR-25	1			C9610	
020-1		347555-7	SPIRAL RETAINING RING 25	1	O	C9610		
021		267304-5	FLAT WASHER 25	1				
022		232360-4	COMPRESSION SPRING 25	1				
023		221494-8	SPUR GEAR 44	1				
024		327039-1	DRIVING FLANGE	1				
025		216019-1	STEEL BALL 3	3				
026		326886-7	TOOL HOLDER	1				
027		326887-5	IMPACT BOLT	1				
028		213117-2	O RING 11	1				
029		253380-5	FLAT WASHER 13	1				
030		326888-3	RING 10	1				
031		232357-3	COMPRESSION SPRING 10A	1				
032		327038-3	CUP SLEEVE	1				
033		233942-5	RING SPRING 22	1				
034		267175-0	FLAT WASHER 24	1				
035		345681-6	JOINT PLATE	1				
036		347128-6	CHANGE PLATE	1				
037		233458-0	COMPRESSION SPRING 32	1				
038		326889-1	STRIKER	1				
039		213832-8	O-RING 13	1				
040		326890-6	PISTON CYLINDER	1				
041		347127-8	GUIDE PLATE	1				
042		324612-8	PISTON JOINT	1				
043		232361-2	CONICAL COMP. SPRING 6-13	1				
044		347130-9	SPRING GUIDE	1				
045		211016-2	BALL BEARING 626LLB	1				
046		221495-6	SPUR GEAR 12	1				
047		326892-2	CAM SHAFT	1				
048		326891-4	CLUCTH CAM	1				
049		219029-7	SWASH BEARING 9	1				
050		253733-8	FLAT WASHER 9	1				
051		251510-2	H. S. HEAD BOLT M3X12 WITH WRM	2				
052		253381-3	FLAT WASHER 3	2				
053		347129-4	SPRING PLATE	1				
054		221496-4	HELICAL GEAR 23	1				
055		211016-2	BALL BEARING 626LLB	1				
056		232359-9	COMPRESSION SPRING 7	2				
057		213833-6	O-RING 60	1				
058		144270-2	INNER HOUSING COMPLETE	1				
059		213118-0	O RING 12	1				
060		326893-0	RING 9	1				
061		210162-8	BALL BEARING 609LLU	1				

A:HR1841F(H)

Interchange
 O : Yes
 X : No
 < : the new part can be substituted for the current.
 > : the current part can be substituted for the new.
 S : Interchangeable as a set.

