



TH	THAILAND
----	----------

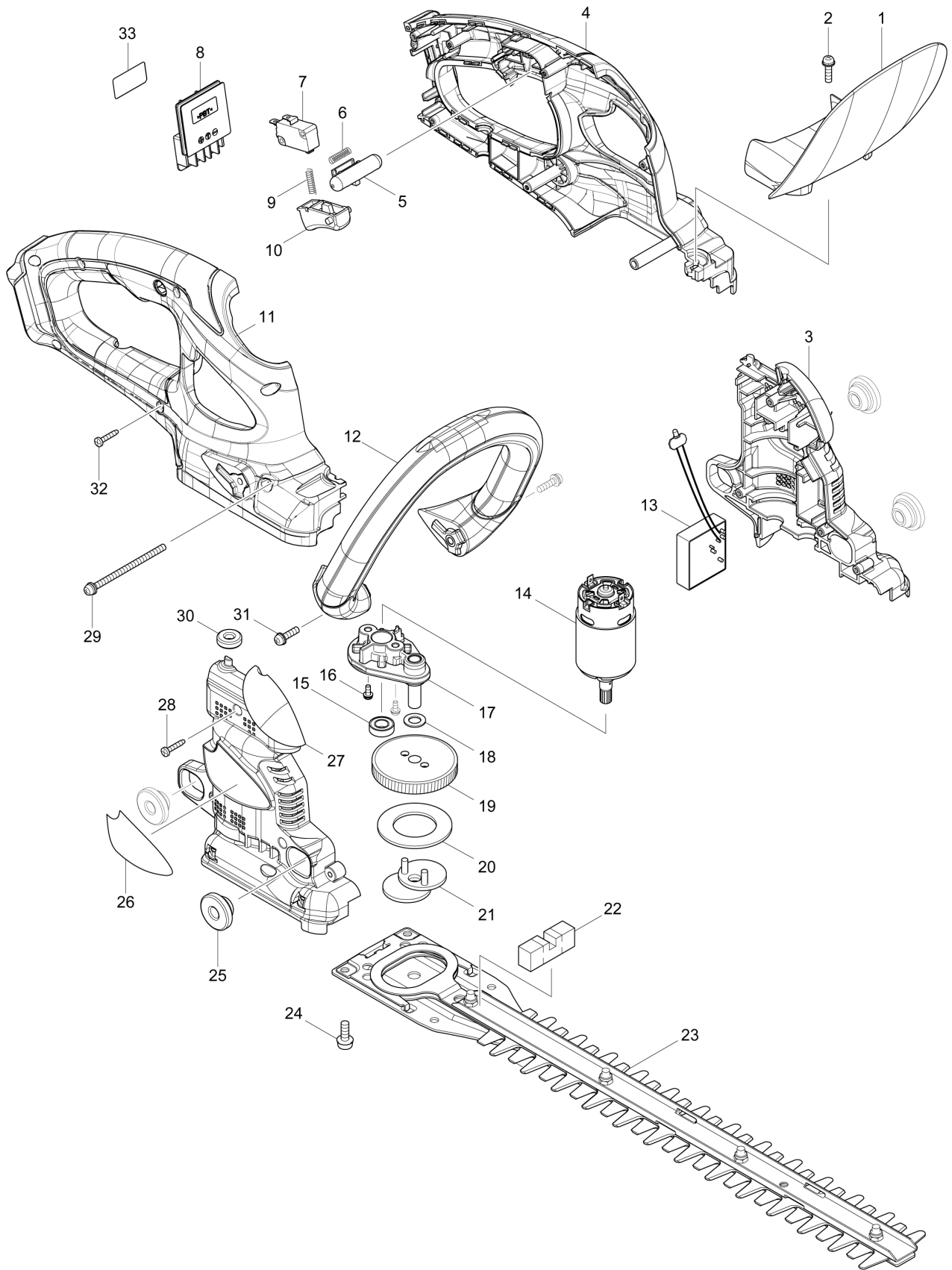
Diagram / Parts List

UH353D

350MM CORDLESS HEDGE TRIMMER



(TH) UH353D / 350MM CORDLESS HEDGE TRIMMER



TH	THAILAND
-----------	-----------------

UH353D / 350MM CORDLESS HEDGE TRIMMER

Item	Sub	Parts No.	Parts Description	Qty	I/C	E/C No.	Close No.	Remark
001		458908-6	PROTECTOR	1				
002		911128-8	P.H.SCREW M4X16 WITH WR	1				
003		183C71-1	MOTOR HOUSING SET	1				
	D10		INC. 27					
004		183K65-4	HANDLE SET	1				
	C10	252126-6	HEX. LOCK NUT M4-7	2				
	C20	931102-0	HEX. NUT M4	2				
	C30	263002-9	RUBBER PIN 4	2				
	D10		INC. 11					
005		458900-2	LOCK OFF BUTTON	1				
006		231473-8	COMPRESSION SPRING 4	1				
007		650744-8	SWITCH D3V-16-3C26	1				
008		644813-5	TERMINAL	1				
009		231473-8	COMPRESSION SPRING 4	1				
010		417564-1	SWITCH LEVER	1				
011		183K65-4	HANDLE SET	1				
	C10	252126-6	HEX. LOCK NUT M4-7	2				
	C20	931102-0	HEX. NUT M4	2				
	C30	263002-9	RUBBER PIN 4	2				
	D10		INC. 4					
012		455329-3	GRIP 25	1				
013		620952-5	CONTROLLER	1				
	C10	654069-2	RECEPTACLE	2				
	C20	654079-9	INSULATED RECEPTACLE DF1.25	1				
	C30	654208-4	RECEPTACLE	1				
	C40	654281-4	RECEPTACLE	1				
014		629380-1	DC MOTOR	1				
015		210124-6	BALL BEARING 688ZZ	1				
016		911008-8	PAN HEAD SCREW M3X8	2				
017		140838-2	MOTOR HOLDER COMPLETE	1				
018		253215-0	FLAT WASHER 8	1				
019		143526-0	GEAR COMPLETE	1				
020		267404-1	FLAT WASHER 28	1				
021		165734-3	CRANK	1			DP966	
021-1		162C43-9	CRANK	1	O	DP966		
022		423342-9	SPONGE SEAL	1				
023		196879-6	SHEAR BLADE ASSEMBLY SET	1				
	C10	252180-0	HEX. LOCK NUT M5-8	4				
	C20	257672-4	SLEEVE 5	4			DE963	
	C21	257889-9	SLEEVE 5	4	O	DE963		
	C30	265193-2	+ TRUSS HEAD SCREW M5X14	4				
024		265074-0	PAN HEAD SCREW M5X16	4				
025		424194-1	RUBBER RING 8	4				
026		818H05-2	UH353D NAME PLATE	1				
027		183C71-1	MOTOR HOUSING SET	1				
	D10		INC. 3					
028		266429-2	TAPPING SCREW 3X16	4				
029		911193-7	PAN HEAD SCREW M4X65	1				
030		424195-9	RUBBER RING 6	1				
031		911128-8	P.H.SCREW M4X16 WITH WR	2				
032		266429-2	TAPPING SCREW 3X16	6				
033		818J24-0	UH353D SERIAL NO. LABEL	1				
A01		458359-3	BLADE COVER	1				
A02B		***DC10WD	DC10WD BATTERY CHARGER	1				
	D10		COMPO-PARTS					
A02C		***DC10WD	DC10WD BATTERY CHARGER	1				
	D10		COMPO-PARTS					
A03B		199291-9	BATTERY BL1016 SET	1			D0163	
A03C		199291-9	BATTERY BL1016 SET	2			D0163	
A03-1B		199291-9	BATTERY BL1016 SET	1	<	D0163		
A03-1C		199291-9	BATTERY BL1016 SET	2	<	D0163		
A04B		456128-6	BATTERY COVER	1				
A04C		456128-6	BATTERY COVER	2				
A05		195246-2	SAFETY GOGGLE	1		D9661	DJ640	

A:UH353DZ(N)
 B:UH353DWY(H)
 C:UH353DWYE(H)

Interchange
 O : Yes
 X : No
 < : the new part can be substituted for the current.
 > : the current part can be substituted for the new.
 S : Interchangeable as a set.