



TH	THAILAND
----	----------

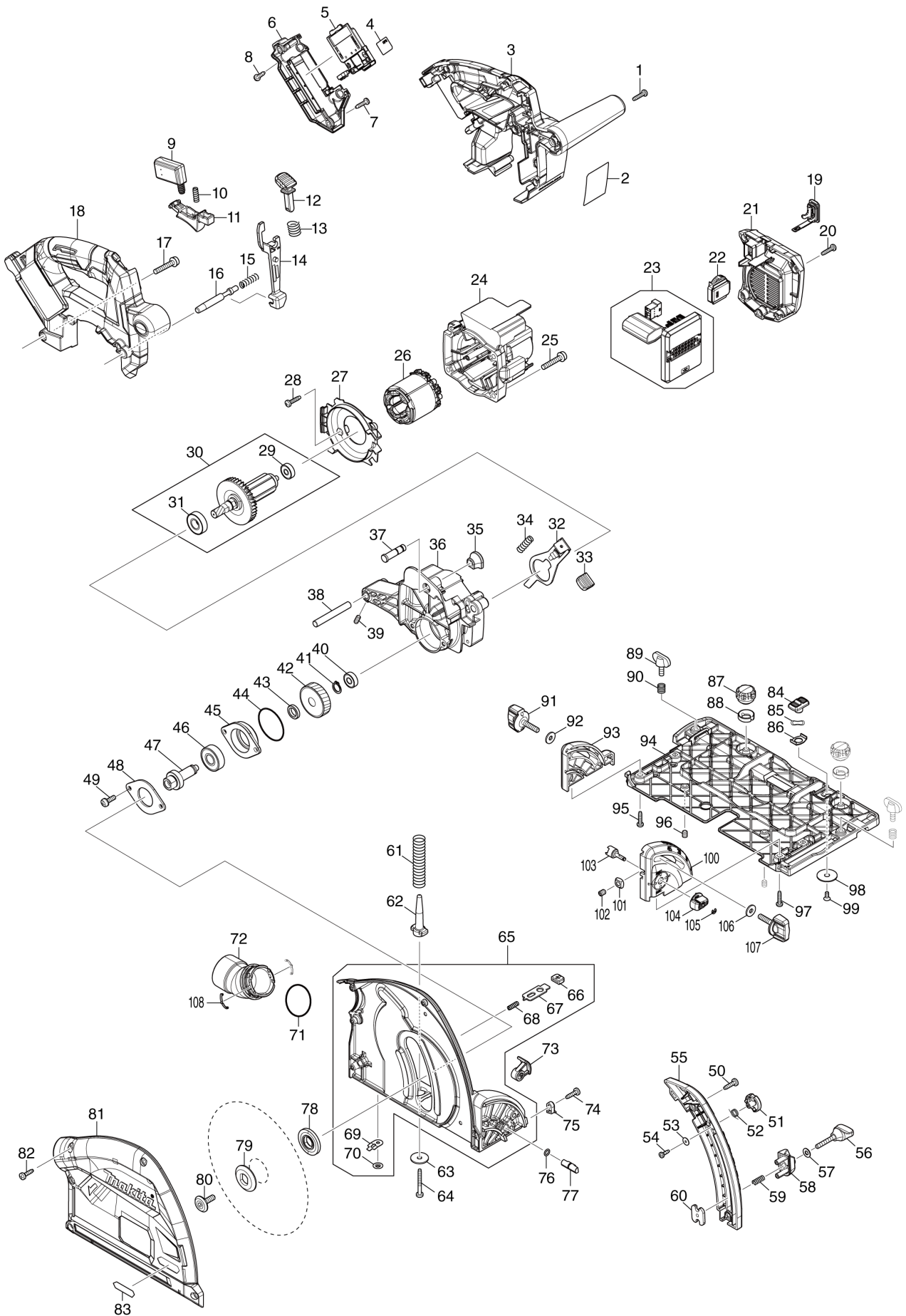
Diagram / Parts List

SP001G

165MM CORDLESS PLUNGE CUT SAW



(TH) SP001G / 165MM CORDLESS PLUNGE CUT SAW



TH	THAILAND
-----------	-----------------

SP001G / 165MM CORDLESS PLUNGE CUT SAW

Item	Sub	Parts No.	Parts Description	Qty	I/C	E/C No.	Close No.	Remark
001		266326-2	TAPPING SCREW 4X18	6				
002		811W45-9	SP001G NAME PLATE	1				
003		183T62-4	HANDLE SET	1				
	C10	263005-3	RUBBER PIN 6	1				
	D10		INC. 18					
004		811W53-0	SP001G SERIAL NO. LABEL	1				
005		632P65-6	TERMINAL UNIT	1				
006		141D05-6	TERMINAL HOUSING COMPLETE	1			DG605	
	C10	263005-3	RUBBER PIN 6	1			DG605	
006-1		136699-6	TERMINAL HOUSING ASSEMBLY	1	O	DG605		
	C10	263005-3	RUBBER PIN 6	1		DG605		
007		266326-2	TAPPING SCREW 4X18	2				
008		266326-2	TAPPING SCREW 4X18	2				
009		651083-9	SWITCH C3XA-1PSPM	1				
010		234078-3	COMPRESSION SPRING 4	1				
011		457748-9	SWITCH LEVER	1				
012		419629-5	LOCK OFF BUTTON	1				
013		233089-5	COMPRESSION SPRING 12	1				
014		457749-7	LOCK PLATE	1				
015		233267-7	COMPRESSION SPRING 7	1				
016		324709-3	LOCK PIN 8	1				
017		911253-5	PAN HEAD SCREW M5X30	2				
018		183T62-4	HANDLE SET	1				
	C10	263005-3	RUBBER PIN 6	1				
	D10		INC. 3					
019		140F99-0	CAP COMPLETE	1				
	C10	213A05-9	O-RING16	1				
	C20	818H07-8	CAP LABEL	1				
020		266326-2	TAPPING SCREW 4X18	5				
021		413844-3	REAR COVER	1				
022		620F56-9	DIAL CIRCUIT	1				
023		620F55-1	CONTROLLER	1				
024		413840-1	MOTOR HOUSING	1				
025		911253-5	PAN HEAD SCREW M5X30	4				
026		629A81-7	STATOR	1				
027		413845-1	BAFFLE PLATE	1				
028		266326-2	TAPPING SCREW 4X18	2				
029		210022-4	BALL BEARING 626DDW	1				
030		519698-7	ROTOR ASSY	1				
	D10		INC. 29,31					
031		211131-2	BALL BEARING 6001DDW	1				
032		345742-2	SHAFT LOCK	1				
033		286039-9	CAP	1				
034		233084-5	COMPRESSION SPRING 6	1				
035		286040-4	CAP	1				
036		141D07-2	GEAR HOUSING COMPLETE	1				
	C10	213415-4	O RING 28	1				
037		324708-5	STOPPER PIN 8	1				
038		324716-6	PIN 8	1			DH707	
038-1		327B66-0	PIN 8	1	<	DH707		
039		266213-5	H.S.SET SCREW(FLAT POINT)M5X12	1				
040		211021-9	BALL BEARING 607LLB	1				
041		961052-5	RETAINING RING (EXT) S-12	1				
042		221548-1	HELICAL GEAR 41	1				
043		257010-0	RING 12	1				
044		213512-6	O RING 39	1				
045		318088-9	BEARING BOX	1				
046		211129-9	BALL BEARING 6201DDW	1				
047		324707-7	SPINDLE	1				
048		285689-7	BEARING RETAINER 55	1				
049		911221-8	PAN HEAD SCREW M5X16	2				
050		266034-5	TAPPING SCREW CT 4X16	2				
051		419630-0	LOCK LEVER	1				
052		231665-9	TORSION SPRING 7	1				
053		253821-1	FLAT WASHER 3	1				

A:SP001GZ02(N)

Interchange
 O : Yes
 X : No
 < : the new part can be substituted for the current.
 > : the current part can be substituted for the new.
 S : Interchangeable as a set.

TH	THAILAND
----	----------

SP001G / 165MM CORDLESS PLUNGE CUT SAW

Item	Sub	Parts No.	Parts Description	Qty	I/C	E/C No.	Close No.	Remark
054		266007-8	TAPPING SCREW BIND PT 3X10	1				
055		413847-7	DEPTH GUIDE	1				
056		265762-9	THUMB SCREW M5X30	1				
057		941101-4	FLAT WASHER 5	1				
058		419623-7	STOPPER BLOCK	1				
059		231372-4	COMPRESSION SPRING 5	1				
060		345744-8	NUT PLATE	1				
061		233479-2	COMPRESSION SPRING 11	1				
062		419624-5	SPRING HOLDER	1				
063		253010-8	FLAT WASHER 6	1				
064		266053-1	TAPPING SCREW 4X35	1				
065		141D06-4	BLADE CASE COMPLETE	1				
	D10		INC. 66-70					
066		286041-2	CAP 14	2				
067		345747-2	SPACER PLATE	2				
068		233025-1	COMPRESSION SPRING 2	2				
069		347392-9	PLATE	2				
070		259008-3	PUSH NUT 4	2				
071		213460-9	O RING 35	1				
072		413846-9	DUST NOZZLE	1				
073		144867-7	LEVER 20 COMPLETE	1				
	C10							
		263002-9	RUBBER PIN 4	1				
074		266034-5	TAPPING SCREW CT 4X16	1				
075		419632-6	POSITION PLATE	1				
076		213021-5	O RING 5	1				
077		324710-8	PIN 8	1				
078		224593-5	INNER FLANGE 35	1				
079		224409-4	OUTER FLANGE 35	1				
080		266403-0	HEX. SOCKET HEAD BOLT M6	1				
081		312B61-3	BLADE CASE COVER	1				
082		266034-5	TAPPING SCREW CT 4X16	5				
083		8025F3-0	XGT LOGO LABEL	1				
084		458092-7	SLIDE LEVER	1				
085		253932-2	WAVE WASHER 10	1				
086		345977-5	PLATE	1				
087		265775-0	THUMB SCREW M4X3	2				
088		419627-9	HOLDER	2				
089		265701-9	THUMB SCREW M6X14	2				
090		231316-4	COMPRESSION SPRING 7	2			DJ857	
090-1		231240-1	COMPRESSION SPRING 7	2	O	DJ857		
091		265776-8	THUMB SCREW M6X26	1				
092		253111-2	FLAT WASHER 6	1				
093		419596-4	REAR ANGULAR GUIDE	1				
094		312B64-7	BASE	1				
095		266326-2	TAPPING SCREW 4X18	2				
096		266225-8	H.S.SET SCREW(FLAT POINT)M6X8	2				
097		266326-2	TAPPING SCREW 4X18	2				
098		345748-0	LOCK WASHER	1				
099		912112-6	COUNTERSUNK HEAD SCREW M4X10	1				
100		413A11-6	FRONT ANGULAR GUIDE	1				
101		252157-5	SQUARE NUT M6	1				
102		266225-8	H.S.SET SCREW(FLAT POINT)M6X8	1				
103		324731-0	STOPPER PIN	1				
104		457963-5	DIAL 22	1				
105		961017-7	STOP RING E-3	1				
106		253111-2	FLAT WASHER 6	1				
107		265776-8	THUMB SCREW M6X26	1				
108		232674-1	LEAF SPRING	2				
A01		B-57364	TCT BLADE165X20X56TWOOD/MDF DE	1				
A02		783203-8	HEX. WRENCH 5	1				
A04		8040F0-2	SP001GZ02 INDICATION LABEL	1				
A05		8040F1-0	SP001GZ02 PLASTIC CASE LABEL	2				
A06		821552-6	CONNECTOR PLASTIC CASE (TYPE4)	1				
	C10							
		453974-8	LATCH	4				
A07		8351E4-2	INNER TRAY	1				

A:SP001GZ02(N)

Interchange

O : Yes

X : No

< : the new part can be substituted for the current.

> : the current part can be substituted for the new.

S : Interchangeable as a set.

